

**COUNTY OF LOS ANGELES
ROAD DEPARTMENT**

**PRECISE
BENCH MARK LIST**



**POMONA QUAD
1965 ADJUSTMENT**

PREFACE

The Road Department level net is composed of more than 1,000 miles of levels supporting in excess of 10,000 bench marks. In 1964-65, a major readjustment of the net was undertaken. To emphasize the complete break with previous elevations, the SY, SG & SL series bench marks have been re-labeled BY, BG & BL, respectively.

To facilitate the adjustment, indexing, and distribution of adjusted values of the net, the County territory was divided into 31 quads or areas. For identification purposes each quad was given a name, viz., "Rosemead," "La Mirada," "Santa Fe," etc. When bench marks and elevations in the Road Department net are used, the name of the quad in which the bench mark is located and the date of the adjustment of the elevation must be included in the bench mark description, e.g.,

BG 1887 --L+BN IN CONC HDWL OF DRAIN PIPE UNDER DR 218 FT
NE +18 FT SE C/L INT SAN JOSE HILLS RD +CAMERON AVE MKD (BM)
(COVINA --1965) ELEV. 696.238

It is expected that this general adjustment will, for the most part, remain sound for the next 8 to 12 years. As new circuits are completed, however, re-adjustment of individual quads may become advisable. It is expected that these subsequent adjustments will be in the nature of a few hundredths of a foot. When a quad is re-adjusted, new elevation lists will be published and the date of the re-adjustment will replace the "1965" at the end of the bench mark description. Two bench marks in the same quad with different adjustment dates will not normally join each other. Since all adjustments taper out to nothing at the periphery of the quad, any bench mark in one quad will join any bench mark in another quad regardless of their respective adjustment dates.

The basic accuracy of the net is reflected by an indicated field probable error of plus or minus 0.012 foot per mile of leveling as determined from 298 conditions of closure. However, many years experience in vertical control in the greater Los Angeles basin and Antelope Valley indicate that because of varying degrees of subsidence and heaving, the true datum is recovered only by obtaining substantial agreement of a number of bench marks.

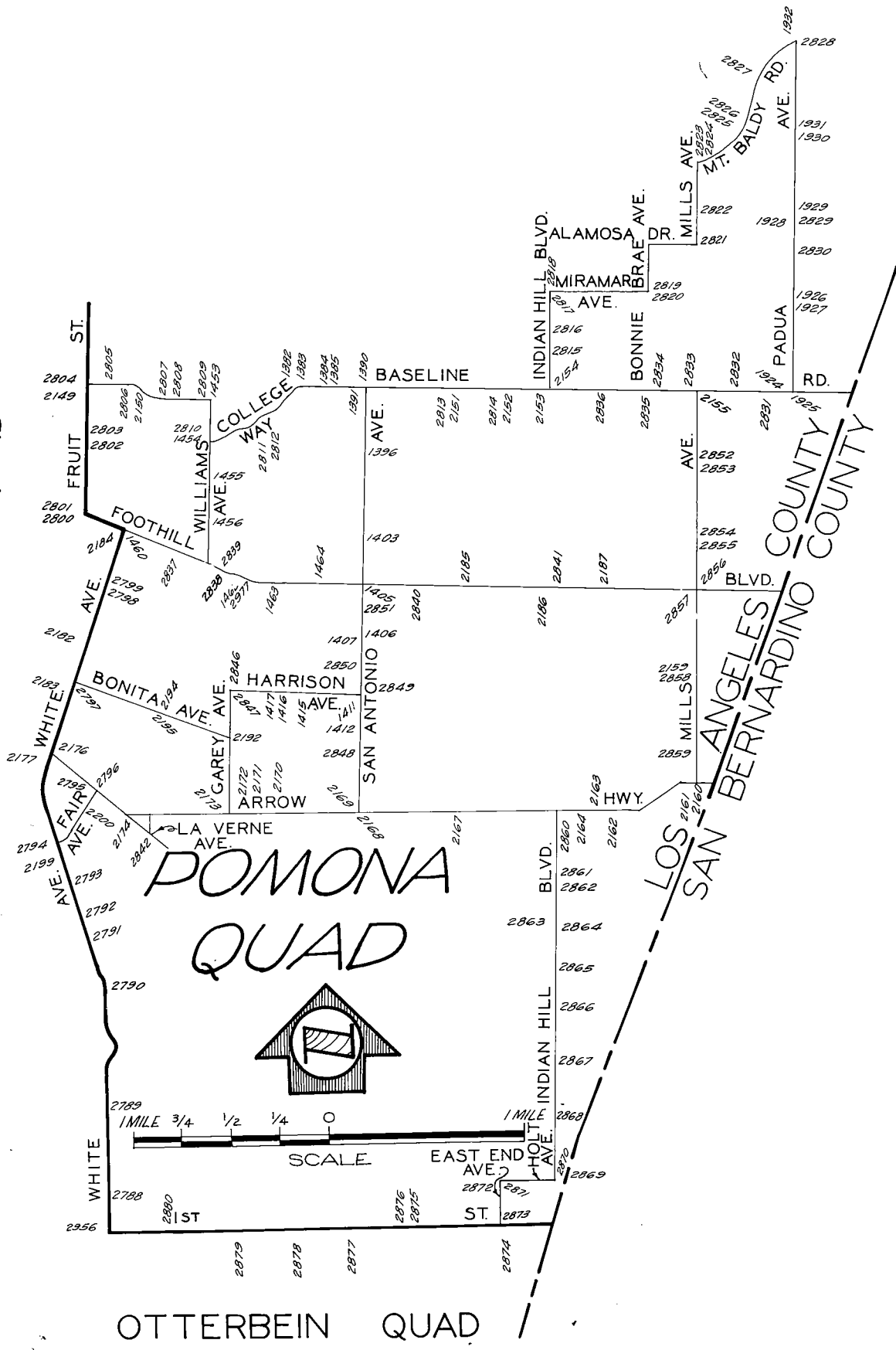
The users of this net are invited to assist in its maintenance by notifying this Department of cases of obliteration, apparent mistakes in descriptions or elevations, and proven disturbance of bench marks.

DATUM: U. S. Coast and Geodetic Survey Sea Level Datum
of 1929, through the medium of the Los Angeles
County Engineer Precise Level Net, 1963 Adjust-
ment.

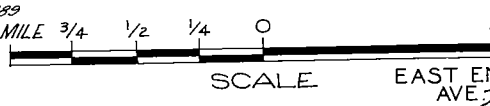
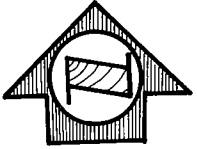
Abbreviations Used in Bench Mark Listings

ABUT--Abutment	L+BN--Lead and Bench Mark Nail
ANG PT--Angle Point	L+BR--Lead and Brad
BC--Beginning of Curve	L+N--Lead and Nail
BCR--Beginning of Curb Return	L+PK--Lead and PK Nail
BLDG--Building	L+SPK--Lead and Spike
BT SPK--Boat or Bolt Spike	L+T--Lead and Tack
CB RET--Curb Return	MCR--Middle of Curb Return
C/L INT--Center Line Intersection	MKD--Marked
C/L PROD--Center Line Produced	NR--Near
COE--Corps of Engineers	OPP--Opposite
CONC--Concrete	PI--Point of Intersection
CS MON--County Surveyor Monument	PK+W--PK Nail and Washer
CS BR CAP--County Surveyor Brass Cap Monument	P/L--Property Line
CT SPK--Cut Spike	P O S T--Point on Semi-tangent
CTR--Center	PP--Power Pole
DN--Down	PVMT--Pavement
DR--Driveway	R D--Road Department
EC--End of Curve	RDBM--Road Department Bench Mark
ENT--Entrance	RR--Railroad
FC--Flood Control (Dept. LA County)	SPK T+W--Spike, Tin and Washer
FTG--Footing	USC+GS--United States Coast and Geodetic Survey
HDWL--Headwall	USGS--United States Geological Survey
HSE--House	WK--Walk
IP--Iron Pipe	±--Plus or Minus
LACE--Los Angeles City Engineer	+--And

SAN DIMAS QUAD



POMONA QUAD



OTTERBEIN QUAD

LOS ANGELES COUNTY
SAN BERNARDINO COUNTY

QUAD-YEAR	ELEV	DESCRIPTION (INCLUDE QUAD AND YEAR IN DESCRIPTION)	BM NUMBER
POMONA (1965)	1345.365	USC+GS BR CAP 3FT N C/L PROD BASE LINE RD + 40FT NW C/L COLLEGE WAY MKD (USC+GS FRENCH)	BG 1382
POMONA (1965)	1344.927	L+BN CONC WK TO HSE NO 353 BASE LINE RD 30FT N C/L + 55FT E C/L COLLEGE WAY	BG 1383
POMONA (1965)	1336.572	CS MON IN WELL 8FT N C/L BASE LINE RD + 8FT W C/L LIVE OAK DR	BG 1384
POMONA (1965)	1337.371	L+T E CB 12FT N BCR @ NE COR BASE LINE RD + LIVE OAK DR	BG 1385
POMONA (1965)	1298.527	CS MON IN WELL 1FT S + 1FT W C/L INT BASE LINE RD + SAN ANTONIO AVE	BG 1390
POMONA (1965)	1297.746	L+BN TOP OF S CONC + ROCK PILLAR OF DR TO HSE NO 4353 SAN ANTONIO AVE	BG 1391
POMONA (1965)	1259.142	L+T SW COR DR TO HSE NO 4052 SAN ANTONIO AVE 55FT E C/L	BG 1396
POMONA (1965)	1213.024	+BN SW COR CONC APRON GARAGE TO HSE NO 3728 SAN ANTONIO AVE 50FT E C/L	BG 1403
POMONA (1965)	1196.206	L+T 15FT W BCR @ SE COR SAN ANTONIO AVE + FOOTHILL BLVD	BG 1405
POMONA (1965)	1175.225	L+BN 1FT N BCR @ NE COR SAN ANTONIO AVE SERV RD + BUTTE ST + 200FT N GROVE ST	BG 1406
POMONA (1965)	1170.755	L+T S CB GROVE ST 27FT W C/L SAN ANTONIO AVE	BG 1407
POMONA (1965)	1133.975	BT SPK W CB SAN ANTONIO AVE 30FT S C/L HARRISON AVE	BG 1411
POMONA (1965)	1131.277	L+BN W CB SAN ANTONIO AVE 4FT N ALLEY BCR + 160 FT S C/L HARRISON AVE	BG 1412
POMONA (1965)	1115.240	L+BN S CB 2FT W BCR @ SW COR SUMNER AVE + HARRISON AVE	BG 1415
POMONA (1965)	1109.324	L+BN S CB HARRISON AVE 3FT E DR TO HSE NO 302	BG 1416
POMONA (1965)	1108.899	L+BN S CB HARRISON AVE 50FT W DR TO HSE NO 302	BG 1417
POMONA (1965)	1274.797	CS MON 5FT N C/L BASE LINE RD + 5FT W C/L WILLIAMS AVE	BG 1453
POMONA (1965)	1257.884	L+BN IN S WINGWALL OF BRIDGE 15FT W C/L WILLIAMS AVE + 45FT S C/L BOWDOIN ST MKD (SD 501)	BG 1454
POMONA (1965)	1223.785	L+BN IN N CB DARTMOUTH ST 70FT E WILLIAMS AVE + 7FT E OF CATCH BASIN MKD (SD 502)	BG 1455
POMONA (1965)	1185.008	L+BN W CB WILLIAMS AVE OPP HSE NO 3728	BG 1456
BASELINE (1965)	1150.342	CS MON SE COR WHITE AVE + FOOTHILL BLVD 15FT E + 51FT S C/L INT	BG 1460
POMONA (1965)	1166.033	L+T IN S CB 1FT W BCR @ SE COR CAREY AVE + FOOTHILL BLVD 2FT W OF CATCH BASIN	BG 1462
POMONA (1965)	1172.589	L+BN S CB FOOTHILL BLVD 15FT W WK TO HSE NO 336 MKD (SD 507)	BG 1463

QUAD-YEAR	ELEV	DESCRIPTION (INCLUDE QUAD AND YEAR IN DESCRIPTION)	BM NUMBER
POMONA (1965)	1179.980	L+BN N CB 5FT W BCR @ NW COR LYNOAK DR + FOOTHILL BLVD	BG 1464
POMONA (1965)	1515.812	CS MON IN WELL 12IN DN @ C/L INT PADUA AVE + BASE LINE RD MKD (LA VERNE M 10 RE 2177)	BG 1924
POMONA (1965)	1517.711	L+T IN N RIM OF CONC RESERVOIR 40FT W + 28FT S C/L INT PADUA AVE + BASE LINE RD	BG 1925
POMONA (1965)	1600.041	CS MON IN WELL 8IN ND @ C/L INT PADUA AVE + MIRAMAR AVE MKD (RE 5869) USE W EDGE	BG 1926
POMONA (1965)	1604.211	L+T IN TOP OF W WINGWALL @ ENT TO DR 35FT E + 5FT S OF C/L INT PADUA AVE + MIRAMAR AVE MKD (BM)	BG 1927
POMONA (1965)	1685.694	RDBM TAG IN BRICK BASE OF FENCE 2FT W OF COR 30FT S + 32FT W C/L INT PADUA AVE + POMELO DR	BG 1928
POMONA (1965)	1686.352	CS MON IN WELL 10IN DN @ C/L INT PADUA AVE + POMELO DR USE NE EDGE	BG 1929
POMONA (1965)	1759.383	CS MON IN WELL 10IN DN @ C/L PADUA AVE 0.5MI N POMELO DR NR DR TO HSE NO 4064 MKD (1/4 SEC TIN R8W S26-27) USE E EDGE	BG 1930
POMONA (1965)	1761.758	L+T IN CONC SLAB TO STEP @ HSE NO 4108 PADUA AVE 28FT E C/L + 0.5 MI N POMELO DR MKD (BM)	BG 1931
POMONA (1965)	1807.506	RDBM TAG 18IN S OF N EDGE OF CONC DR 1FT E OF BLOCK PILLAR @ ENT TO L A CO FIRE STA NO 62 264FT N + 28FT W C/L INT PADUA AVE + MT BALDY RD	BG 1932
BASELINE (1965)	1171.085	CS MON IN WELL 8FT W C/L FRUIT ST + 100FT S C/L BASE LINE RD MKD (BM 13-11 1952 RE 63)	BG 2149
POMONA (1965)	1235.018	USC+GS TRI MON IN CONC 1635FT E FRUIT ST 15FT N C/L BASE LINE RD MKD (USC+GS BM)	BG 2150
POMONA (1965)	1346.593	CS MON IN WELL 2FT N C/L BASE LINE RD + 2FT E C/L MOUNTAIN AVE MKD (LA VERNE 110 RE 2177)	BG 2151
POMONA (1965)	1374.350	USC+GS MON ON E SIDE OF RESERVOIR 160FT S C/L BASE LINE RD + 57FT W C/L OXFORD AVE MKD (USC+GS BM F-36)	BG 2152
POMONA (1965)	1394.384	USC+GS MON IN CONC POST @ SW COR 18FT S BASE LINE RD + 35FT W INDIAN HILL BLVD MKD (USC+GS BM D-36)	BG 2153
POMONA (1965)	1394.506	CS MON IN WELL 2FT N BASE LINE RD + 4FT E INDIAN HILL BLVD MKD (TRA STA LA VERNE J-10 RE 2177)	BG 2154
POMONA (1965)	1467.140	CS MON IN WELL 2FT S C/L BASE LINE RD + 2FT W C/L MILLS AVE MKD (TRA STA LA VERNE L-10)	BG 2155
POMONA (1965)	1223.329	CS MON IN WELL 7FT W C/L MILLS AVE + 4FT N C/L 6TH ST MKD (TRA STA CLAREMONT 1939 RE 2177)	BG 2159
POMONA (1965)	1152.094	CS MON IN WELL @ C/L INT ARROW HWY + MILLS AVE MKD (RE 2177)	BG 2160
POMONA (1965)	1153.460	L+BN S CB ARROW HWY 1FT E BCR @ SE COR MILLS AVE 30FT S + 77FT E C/L INT	BG 2161
POMONA (1965)	1117.956	L+BN W CB 21FT S BCR @ SW COR 18FT W C/L VILLANOVA DR 85FT S C/L ARROW HWY + 66FT S C/L CUCAMONGA AVE PROD FROM E	BG 2162

QUAD-YEAR	ELEV	DESCRIPTION (INCLUDE QUAD AND YEAR IN DESCRIPTION)	BM NUMBER
POMONA (1965)	1108.283	L+PK W CB COLLEGE AVE 52FT N BCR @ NW COR ARROW HWY 26FT W + 52FT N C/L INT	BG 2163
POMONA (1965)	1109.794	RDBM TAG S CB 10FT E END OF CB 50FT S C/L ARROW HWY + 210FT E C/L INDIAN HILL BLVD	BG 2164
POMONA (1965)	1091.253	L+PK W CB MOUNTAIN AVE 1FT S BCR @ SW COR CUCAMONGA AVE (ARROW HWY) 20FT W + 71FT S C/L INT	BG 2167
POMONA (1965)	1068.849	RDBM TAG IN S CB CUCAMONGA AVE 1FT W BCR @ SE COR SAN ANTONIO AVE 42FT S + 59FT E C/L INT	BG 2168
POMONA (1965)	1070.301	RDBM TAG IN N CB SAN ANTONIO AVE 3FT W BCR @ NW COR CUCAMONGA AVE 39FT N + 88FT W C/L INT	BG 2169
POMONA (1965)	1050.216	L+BN E CB KIMBALL AVE 11FT N BCR @ NE COR CUCAMONGA AVE 18FT E + 62FT S C/L INT	BG 2170
POMONA (1965)	1044.244	L+BRAD E CB MAPLE AVE 2FT N BCR @ SE COR CUCAMONGA AVE 18FT E + 75FT S C/L INT	BG 2171
POMONA (1965)	1039.412	RDBM TAG S CB CUCAMONGA AVE 1FT E BCR @ SE COR GAREY AVE 40FT S + 60FT E C/L INT	BG 2172
POMONA (1965)	1040.506	RDBM TAG IN N CB CUCAMONGA AVE 1FT W BCR @ NW COR GAREY AVE 40FT N + 64FT S C/L INT	BG 2173
POMONA (1965)	1028.081	L+T NR NW COR OF CONC DRWY TO HSE NO 475 31FT NE C/L LA VERNE RD + 110FT S C/L CUCAMONGA AVE	BG 2174
BASELINE (1965)	1037.430	CS MON IN WELL 1FT E OF E CB WHITE AVE 104FT N C/L ARROW HWY (LA VERNE RD) + 210FT W C/L WHITE AVE MKD (BM 13-7 RE 63 1952)	BG 2176
BASELINE (1965)	1037.157	RDBM TAG IN W CB WHITE AVE 1FT W BCR @ SW COR ARROW HWY 34FT W + 68FT S C/L INT	BG 2177
BASELINE (1965)	1082.392	CS MON IN WELL 2FT N OF N CB 7TH ST 17FT W BCR @ SW COR WHITE AVE 18FT N + 43FT W C/L INT	BG 2182
BASELINE (1965)	1064.595	L+BN W CB WHITE AVE 10FT S BCR @ SW COR BONITA AVE 25FT W + 71FT S C/L INT	BG 2183
BASELINE (1965)	1152.388	COE MON 3IN UP @ SW COR FOOTHILL BLVD + LINCOLN AVE (WHITE AVE) 41FT S + 211FT W C/L INT	BG 2184
POMONA (1965)	1230.724	BT SPK E CB @ NE COR MOUNTAIN AVE + FOOTHILL BLVD MKD (SD 515)	BG 2185
POMONA (1965)	1253.519	BT SPK @ SW COR INDIAN HILL BLVD + FOOTHILL BLVD MKD (BM KK 49)	BG 2186
POMONA (1965)	1281.874	L+PK @ NW COR FOOTHILL BLVD + COLLEGE AVE MKD (33)	BG 2187
POMONA (1965)	1083.032	CAL STATE HWY MON IN WELL @ C/L INT GAREY AVE + BONITA AVE	BG 2192
POMONA (1965)	1078.224	L+T 1FT N OF N CB @ CTR OF CULV BRIDGE 30FT N C/L BONITA AVE + 59FT E C/L FULTON RD	BG 2194
POMONA (1965)	1078.371	L+T E END OF CULV BRIDGE 36FT S C/L BONITA AVE + 47FT E C/L FULTON RD	BG 2195
BASELINE (1965)	995.976	CS MON IN WELL IN LA CO FAIR GROUNDS @ CHAIN LINK FENCE ON E PROP LINE OF FAIR GROUNDS 18FT NW C/L PROD FAIR AVE 110FT W C/L WHITE AVE NR PP NO 1199570E MKD (LACFG NO 53)	BG 2199

QUAD-YEAR	ELEV	DESCRIPTION (INCLUDE QUAD AND YEAR IN DESCRIPTION)	BM NUMBER
POMONA (1965)	1019.237	L+BN N CB 2FT E CB END @ W PL HSE NO 2240 0.1MI W LAVERNE RD 15FT N C/L FAIR AVE	BG 2200
BASELINE (1965)	858.342	CS MON IN WELL 7IN DN IN GUTTER @ SW COR HOLT AVE + WHITE AVE 36FT S + 55FT W C/L INT MKD (BM 13-1 1952)	BG 2788
BASELINE (1965)	884.661	CS MON 8IN DN @ SE COR WHITE AVE + ORANGE GROVE AVE 46FT E C/L WHITE AVE + 2FT S OF S CB LINE ORANGE GROVE AVE	BG 2789
BASELINE (1965)	929.387	CS MON 10IN DN IN PARKING OUT @ PARK 241FT WLY WHITE AVE + 108FT SLY MCKINLEY AVE MKD (13-3)	BG 2790
BASELINE (1965)	950.071	CS MON IN LA CO FAIR GROS 78FT ELY + 66FT SLY OF SELY COR MAIN EXHIBIT BLDG 25FT NLY OF ENTRANCE GATE	BG 2791
BASELINE (1965)	966.827	CS MON 10IN DN IN LA CO FAIR GROS 88FT NLY FROM NELY COR MAIN EXHIBIT BLDG + 39FT WLY FROM FIRE HYDRANT	BG 2792
BASELINE (1965)	987.438	CS MON 7IN DN 40FT SWLY FROM NELY COR BARN NO 11 + 30FT SLY FROM 14IN COTTONWOOD TREE	BG 2793
BASELINE (1965)	1001.120	L+PK E CB WHITE AVE 12FT S OF S EDGE CONC APRON OF GATE 14 TO LA CO FAIR GROS 0.4MI S ARROW HWY 40FT E C/L WHITE AVE	BG 2794
POMONA (1965)	1032.669	L+PK S CB 0.5FT W BCR @ S OUT ARROW HWY + FAIR AVE 42FT S + 47FT W APPROX OUT INT	BG 2795
POMONA (1965)	1033.075	L+T N CB 42FT N C/L ARROW HWY @ C/L PROD FAIR AVE	BG 2796
BASELINE (1965)	1065.247	L+BN S CB BONITA AVE 0.5FT W BCR @ SE COR WHITE AVE 37FT E @ 25FT S C/L INT	BG 2797
BASELINE (1965)	1102.774	L+BN E CB WHITE AVE 1FT S BCR @ SE COR KENDALL ST 50FT S + 40FT E C/L INT	BG 2798
BASELINE (1965)	1104.469	L+BN E CB WHITE AVE 1FT N BCR @ NE COR KENDALL ST 45FT N + 40FT E C/L INT	BG 2799
BASELINE (1965)	1139.783	BT SPK ^N CB FOOTHILL BLVD ⁰⁸ 61FT ^W BCR @ NW COR FRUIT ST ¹⁰⁷ 163FT ^W + 40FT ³⁷ C/L INT	BG 2800
BASELINE (1965)	1139.340	BT SPK ^N CB FOOTHILL BLVD ⁰⁸ 61FT ^W BCR @ NW COR FRUIT ST ¹⁰⁷ 163FT ^W + 40FT ³⁷ C/L INT	BG 2801
BASELINE (1965)	1155.425	CS MON C/L FRUIT ST 1300FT N C/L FOOTHILL BLVD @ HSE NO 3835 MKD (RE 5869)	BG 2802
BASELINE (1965)	1160.804	CS MON 10IN DN @ C/L INT FRUIT ST + BOWDOIN ST MKD (RE 5869)	BG 2803
BASELINE (1965)	1173.780	CS MON 10IN DN @ C/L INT BASELINE RD + FRUIT ST	BG 2804
POMONA (1965)	1192.202	CS MON 10IN DN @ C/L BASELINE RD 152FT W JAPONICA AVE MKD (RE 5869)	BG 2805
POMONA (1965)	1193.569	CS TAG S CB BASELINE RD 23FT W BCR @ SW COR JAPONICA AVE 79FT W + 40FT S C/L INT	BG 2806
POMONA (1965)	1219.765	L+BN N CB BASELINE RD 1FT W BCR @ NW COR ST MARK AVE 52FT W + 34FT N C/L INT	BG 2807

QUAD-YEAR	ELEV	DESCRIPTION (INCLUDE QUAD AND YEAR IN DESCRIPTION)	BM NUMBER
POMONA (1965)	1223.919	L+BN N CB BASELINE RD @ NE COR ST MARK AVE 52FT E + 34FT N C/L INT	BG 2808
POMONA (1965)	1277.209	L+T W CB DR TO LE ROYS HOME 46FT W + 42FT N C/L INT BASELINE RD WILLIAMS AVE	BG 2809
POMONA (1965)	1297.426	CDE BR CAP MON IN CONC BASE 6IN UP @ NW COR WILLIAMS AVE + BOWDOIN ST 20FT N + 28FT W C/L INT	BG 2810
POMONA (1965)	1308.122	RAMSET S CB COLLEGE WAY 1FT W BCR @ SW COR TENANGO RD 62FT W + 18FT S C/L INT	BG 2811
POMONA (1965)	1311.447	ROBM TAG S CB COLLEGE WAY 2FT E BCR @ SE COR TENANGO RD 60FT E + 18FT S C/L INT	BG 2812
POMONA (1965)	1345.906	L+T W CB MOUNTAIN AVE 0.5FT S BCR @ SW COR BASE- LINE RD + MOUNTAIN AVE 70FT S + 30FT W C/L INT	BG 2813
POMONA (1965)	1368.665	ROBM TAG S CB BASELINE RD 20FT W END C B 256FT W + 40FT S C/L INT OXFORD AVE	BG 2814
POMONA (1965)	1418.989	L+T S CB TO DRWY OF HSE NO 3032 INDIAN HILL BLVD 0.2MI N BASELINE RD	BG 2815
POMONA (1965)	1444.861	L+T CONC WK TO HSE NO 3762 INDIAN HILL BLVD 63FT E C/L + 0.15MI S C/L MIRAMAR AVE	BG 2816
POMONA (1965)	1461.241	CDE BR CAP MON IN CONC POST IN UP @ SW COR APPARENT C/L INDIAN HILL BLVD + MIRAMAR AVE 4FT NLY PP 471071E	BG 2817
POMONA (1965)	1490.313	L+T S SIDE CONC BASE OF LARGE TANK 37FT N + 5FT E C/L INT MIRAMAR AVE + FORBES AVE	BG 2818
POMONA (1965)	1522.426	L+T W CB BONNIE BRAE AVE 1FT N BCR @ NW COR MIRAMAR AVE 33FT N + 10FT W C/L INT	BG 2819
POMONA (1965)	1521.671	L+T N CB MIRAMAR AVE 0.5FT W BCR @ NW COR BONNIE BRAE AVE 30FT W + 18FT N C/L INT	BG 2820
POMONA (1965)	1587.258	L+T CONC WK TO HSE NO 3509 MILLS AVE @ NW COR ALAMOSA DR 95FT N + 49FT W C/L INT	BG 2821
POMONA (1965)	1620.625	2IN IP C/L MILLS AVE 52FT N C/L POMELLO DR 3IN DN USE NE EDGE	BG 2822
POMONA (1965)	1660.240	L+BN SW LEG CONC BASE TO TOWER NO 228 D 6 @ NE COR MILLS AVE + MT BALDY RD 400FT E + 81FT N C/L INT	BG 2823
POMONA (1965)	1660.226	L+BN SE LEG CONC BASE TO TOWER NO 228 D 6 @ NE COR MT BALDY RD + MILLS AVE 435FT E + 81FT N C/L INT	BG 2824
POMONA (1965)	1687.034	L+BN SE CONC BASE TO TOWER 228 D 5 @ NW COR MT BALDY RD + VIA PADOVA 82FT N + 56FT W C/L INT	BG 2825
POMONA (1965)	1689.977	L+BN N END ROCK WALL 52FT N + 25FT W MT BALDY RD + VIA PADOVA	BG 2826
POMONA (1965)	1732.850	L+BN BOT STEP CONC WK TO POTTERY SHOP APPROX 0.25MI E VIA PADOVA + 78FT N C/L MT BALDY RD MKD (BM)	BG 2827
POMONA (1965)	1806.276	L+T ROCK WL @ NE COR MT BALDY RD + PADUA AVE 77 FT N + 30FT E C/L INT	BG 2828

QUAD-YEAR	ELEV	DESCRIPTION (INCLUDE QUAD AND YEAR IN DESCRIPTION)	BM NUMBER
POMONA (1965)	1685.382	RDBM TAG E CB PADUA AVE 3FT S BCR @ SE COR PAM- ELLO DR 58FT S + 32FT E C/L INT	BG 2829
POMONA (1965)	1841.048	L+T CONC WK TO HSE NO 950 ALAMOSA DR 85FT W + 29FT S C/L INT PADUA AVE	BG 2830
POMONA (1965)	1512.038	L+T CONC STEP TO ROCK PUMP HSE NO 1900 283FT W + 32FT S C/L INT PADUA AVE + BASELINE RD	BG 2831
POMONA (1965)	1487.014	RAMSET E CB CLAREMONT HEIGHTS DR 1FT N BCR @ NE COR BASELINE RD 63FT N + 18FT E C/L INT	BG 2832
POMONA (1965)	1468.761	SPK+T IN PP 881150E @ NW COR BASELINE RD + MILLS AVE 27FT W + 22FT N C/L INT	BG 2833
POMONA (1965)	1449.354	SPK IN PP 88145E @ NE COR BASELINE RD + BONNIE BREA AVE 29FT E + 24FT N C/L INT	BG 2834
POMONA (1965)	1447.479	L+BN IN CONC WIER STD PIPE 2FT UP 29FT S + 2FT W C/L INT BASELINE RD + BONNIE BREA AVE	BG 2835
POMONA (1965)	1418.608	RDBM TAG S CB BASELINE RD 26FT W END CB 55FT W + 40FT S C/L INT FORBES AVE	BG 2836
POMONA (1965)	1155.972	L+B S CB 1FT W BCR @ SE COR FOOTHILL BLVD + FAL- CON ST 40FT S + 34FT E C/L INT	BG 2837
POMONA (1965)	1160.612	BR DISK IN C B 115FT E + 36FT S C/L INT FOOTHILL BLVD + WILLIAMS AVE	BG 2838
POMONA (1965)	1161.289	CS BR DISK C B 150FT E + 36FT N C/L INT WILLIAMS AVE + FOOTHILL BLVD	BG 2839
POMONA (1965)	1215.046	SPK+L S CB 2FT W DR TO CASWELLS TRAILER SALES NO 950 FOOTHILL BLVD 35FT S + 600FT E C/L INT REGIS ST MKD (SD 513)	BG 2840
POMONA (1965)	1256.674	L+PK E CB 20FT N BCR @ NE COR FOOTHILL BLVD + INDIAN HILL BLVD 107FT N OUT E C/L INT	BG 2841
POMONA (1965)	1026.927	L+BN IN PORCH TO HSE NO 429 140FT W + 65FT N C/L INT LAVERNE AVE + FULTON RD	BG 2842
POMONA (1965)	1103.772	RDBM TAG E CB GAREY AVE 1FT N BCR @ NE COR HARRISON AVE 45FT N + 42FT E C/L INT	BG 2846
POMONA (1965)	1102.375	RDBM TAG E CB GAREY AVE OUT BCR @ SE COR HARRISON AVE 45FT S + 42FT E C/L INT	BG 2847
POMONA (1965)	1113.618	L+PK W CB 2FT S BCR @ SW COR SAN ANTONIO AVE + E BONITA AVE 60FT S + 45FT W C/L INT	BG 2848
POMONA (1965)	1135.231	L+PK N CB HARRISON AVE 8FT W BCR @ NW COR SAN ANTONIO AVE 80FT W + 18FT N C/L INT MKD (SD 522)	BG 2849
POMONA (1965)	1153.450	RDBM TAG W CB SAN ANTONIO AVE 1FT S BCR @ SW COR EDWIN AVE 52FT S + 40FT W C/L INT	BG 2850
POMONA (1965)	1194.463	CS MON IN WELL 12IN DN @ SE COR FOOTHILL BLVD + SAN ANTONIO AVE 67FT S + 51FT E C/L INT MKD (RE 5869 1961 RM 5)	BG 2851
POMONA (1965)	1404.807	RAMSET E CB MILLS AVE 5FT N BCR @ NE COR BLACK HILLS DR 50FT N + 33FT E C/L INT	BG 2852
POMONA (1965)	1403.947	RAMSET S CB BLACK HILLS DR 1FT E BCR @ SE COR MILLS AVE 61FT E + 18FT S C/L INT	BG 2853

QUAD-YEAR	ELEV	DESCRIPTION (INCLUDE QUAD AND YEAR IN DESCRIPTION)	BM NUMBER
POMONA (1965)	1354.058	RAMSET E CB MILLS AVE 1 FT W BCR @ NE COR BLAISDELL DR 46FT N + 32FT W C/L INT	BG 2854
POMONA (1965)	1352.308	RAMSET S CB BLAISDELL DR 5FT W BCR @ SE COR MILLS AVE 62FT E + 19FT S C/L INT	BG 2855
POMONA (1965)	1307.043	L+PK N CB 5FT E BCR @ NE COR FOOTHILL BLVD + MILLS AVE 50FT E + 45FT N C/L INT	BG 2856
POMONA (1965)	1304.285	RDBM TAG S CB 1FT W BCR @ SW COR FOOTHILL BLVD + MILLS AVE 45FT S + 55FT W C/L INT	BG 2857
POMONA (1965)	1222.773	L+T W CB MILLS AVE 25FT S BCR @ SW COR 6TH ST 56FT S + 18FT W C/L INT	BG 2858
POMONA (1965)	1169.246	CS TRAV MON 18IN DN 6.7FT S/O S TRACK ATSF RR + 8FT W C/L MILLS AVE 100FT N ELDER DR	BG 2859
POMONA (1965)	1107.114	L+T E CB INDIAN HILL BLVD 1FT N BCR @ SE COR ARROW HWY 88FT S + 42FT E C/L INT	BG 2860
POMONA (1965)	1076.900	L+PK W CB INDIAN HILL BLVD 5FT N BCR @ NW COR VISTA DR 55FT N + 35FT W C/L INT	BG 2861
POMONA (1965)	1073.645	RDBM TAG W CB INDIAN HILL BLVD 1FT S BCR @ SW COR VISTA DR 53FT S + 35FT W C/L INT	BG 2862
POMONA (1965)	1045.987	RDBM TAG W CB INDIAN HILL BLVD 1FT N BCR @ NW COR SAN JOSE AVE 55FT N + 40FT W C/L INT	BG 2863
POMONA (1965)	1043.306	RDBM TAG E CB INDIAN HILL BLVD 1FT S BCR @ SE COR SAN JOSE AVE 62FT S + 40FT E C/L INT	BG 2864
POMONA (1965)	1018.934	L+PK S CB AMERICAN AVE 12FT E BCR @ SE COR INDIAN HILL BLVD 80FT E + 17FT S C/L INT	BG 2865
POMONA (1965)	995.739	L+PK N CB SAN BERNARDINO AVE 0.5FT E BCR @ NW COR INDIAN HILL BLVD 63FT W + 27FT N C/L INT	BG 2866
POMONA (1965)	966.848	L+PK W CB INDIAN HILL BLVD 0.3FT N BCR @ NW COR LINCOLN AVE 47FT N + 35FT W C/L INT	BG 2867
POMONA (1965)	943.662	L+T W CB INDIAN HILL BLVD 3FT N BCR @ NW COR KINGSLEY AVE 55FT N + 35FT W C/L INT	BG 2868
POMONA (1965)	923.452	L+PK N CB HOLT AVE 1FT E BCR @ NE COR INDIAN HILL BLVD 68FT E + 39FT N C/L INT	BG 2869
POMONA (1965)	922.688	RDBM TAG N CB HOLT AVE 1FT W BCR @ NW COR INDIAN HILL BLVD 60FT W + 39FT N C/L INT	BG 2870
POMONA (1965)	915.629	L+T S CB HOLT AVE 0.3FT E BCR @ SE COR EAST END AVE 71FT E + 40FT S C/L INT	BG 2871
POMONA (1965)	914.820	L+T W CB EAST END AVE 3FT N BCR @ SW COR HOLT AVE 80FT S + 35FT W C/L INT	BG 2872
BASELINE (1965)	902.229	L+T W CB EAST END AVE 2FT N BCR @ NW COR E FIRST ST 60FT N + 40FT W C/L INT	BG 2873
BASELINE (1965)	900.629	CS MON FL 1FT S CF + 8FT W BCR OF S CB E FIRST ST @ SW COR EAST END AVE 84FT W + 16FT S C/L INT MKD (11-77A 1959 CE RE 5869)	BG 2874
BASELINE (1965)	885.081	CS MON 10IN DN @ NE COR E FIRST ST 14FT N + 26FT E C/L INT (11-78)	BG 2875
BASELINE (1965)	887.234	BR PLATE FL N END C B 30FT E C/L RESERVOIR ST 150FT N C/L E FIRST ST	BG 2876

FEB 1965

LOS ANGELES COUNTY ROAD DEPARTMENT
SURVEY SECTION FIELD ENGINEERING DIVISION

PAGE 6

QUAD-YEAR	ELEV	DESCRIPTION (INCLUDE QUAD AND YEAR IN DESCRIPTION)	BM NUMBER
BASELINE (1965)	878.588	L+T E CB SAN ANTONIO AVE @ SE COR E FIRST ST 60FT S + 32FT E C/L INT	BG 2877
BASELINE (1965)	877.272	CS MON FL @ SW ABT OF BR OVER TOWNE AVE 27FT S C/L E FIRST ST	BG 2878
BASELINE (1965)	863.467	CS MON JOIN DN @ SW COR FIRST ST + ELM AVE 31FT S + 15FT W C/L INT	BG 2879
BASELINE (1965)	862.054	BR DISK SIDE OF VALLEY COMMERCIAL FOODS BLDG 139FT N GORDON ST @ SW COR FIRST ST STAMPED (861 USC+GS)	BG 2880
BASELINE (1965)	850.571	CS MON FL IN HOWL 27FT S C/L FIRST ST + 64FT W C/L WHITE AVE MKD (BM 11-83A 1962)	BG 2956
POMONA (1965)	1165.265	L+N W CB 61FT S BCR @ SW COR FOOTHILL BLVD + CAREY AVE 101FT S + 42FT W C/L INT MKD (SD 504)	BG 2977

OUT
OUT